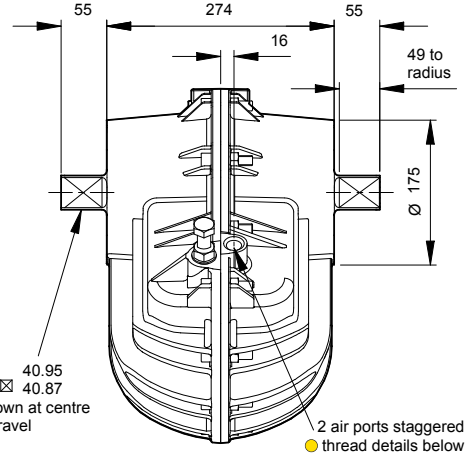
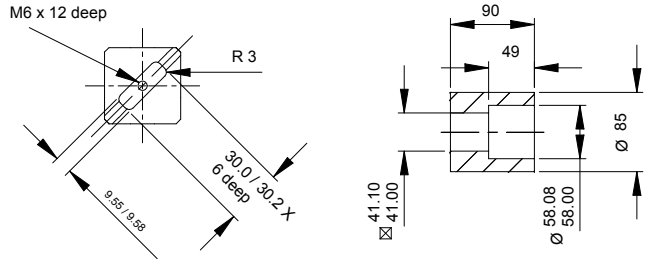


Model 16



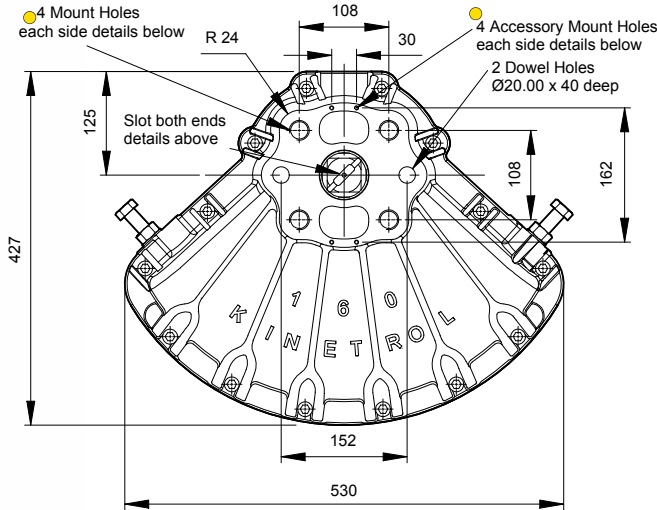
Standard Coupling
(supplied with actuator
weight 5.3 lbs/2.4 kg)

Vane Slot detail both ends



Air Port/Mount Hole Details

Model	Air Ports	Mount Holes & Accessory Mount Holes
164-100	G ^{1/2}	4 x M24 x 38 deep on 152.7 PCD 4 x M5 x 8 deep
167-100	1/2 NPT	4 x 7/8 UNC x 1.50" deep on 6.012" PCD 4 x 10-24 UNC x 0.31" deep



Specification

Output Torque

27000 lbf ins/3100 Nm
at 100 psi/7 bar

Angle of Travel (adjustable)

80° - 100°
(restricted travel
versions available)

Displaced Volume

465 in³/7630 cm³

Finish

Epoxy stove enamel

Weight

82.5 lb/37.4 kg
(excluding coupling)

For further information
see General Specification
on page 50.

- ### Options
- Fail safe spring return units - clockwise or counter clockwise see pages 5-7
 - Limit switch boxes for open/close indication - various switches for hazardous areas see pages 9-12
 - AP pneumatic positioner - full range of options see pages 17/18
 - EL electropneumatic positioner - full range of options see pages 15/16
 - 180° model see page 25/26
 - Female drive and mounting details to DIN 3337 and ISO 5211 see page 50
 - Spring to centre see page 24
 - Geared manual override see page 46
 - Code identification see page 62
 - Torque outputs see pages 58-60
 - See pages 49-52 for English dimensions and dimensions of spring options
 - High Temperature / Low temperature options see page 50

