

# Shut-off and control valves

## Absperr- und Regelventile

### Vannes tout ou rien et vannes de régulation

5300-AR-7010



Electric series  
Elektrische Baureihen  
Séries électriques

- MV 5311-AR
- MV 5321-AR
- MV 5331-AR

Pneumatic series  
Pneumatische Baureihen  
Séries pneumatiques

- PV 6311-AR
- PV 6321-AR
- PV 6331-AR

#### Valves for the throttling, mixing and diverting of liquids and gases

- NPS ½" ...6"
- Class 150...900
- Two-way and three-way design
- Valve body material  
A216 WCB  
A351 CF8M  
A 217 WC9
- On-off plug, Parabolic plug, Perforated plug, V-port plug, Mixing-/ Diverting plug

#### Ventile für die Drosselung, Mischung und Verteilung flüssiger und gasförmiger Medien

- NPS ½" ...6"
- Class 150...900
- Durchgangs- und Dreiwegform
- Ventilgehäuse aus  
A216 WCB  
A351 CF8M  
A 217 WC9
- Absperrkegel, Parabolkegel, Lochkegel, Kronenkegel, Misch-/ Verteilkegel

#### Vannes pour le contrôle du débit, le mélange et la répartition des fluides liquides et gazeux

- NPS ½" ...6"
- Class 150...900
- À passage droit ou à trois voies
- Matériaux du corps de la vanne en  
A216 WCB  
A351 CF8M  
A 217 WC9
- Clapet tout ou rien, clapet parabolique, clapet perforé, Clapet lanterne, Clapet mélangeur / répartiteur

Regeltechnik Kornwestheim GmbH  
Max-Planck-Straße 3  
70806 Kornwestheim  
GERMANY

Telefon +49 7154 1314-0  
Telefax +49 7154 1314-333  
Internet www.rtk.de  
E-Mail: info@rtk.de



**REGELTECHNIK  
KORNWESTHEIM**

A division of CIRCOR International, Inc.

**Shut-off and control valves**  
**Absperr- und Regelventile**  
**Vannes tout ou rien et vannes de régulation**

**5300-AR-7020**

**Technical data**

Nominal diameter: NPS ½" ... 6"  
 Nominal pressure: Class 150; 300; 600\*; 900\*  
 Body materials: A216 WCB (Class 150...900)  
 A351 CF8M (Class 150...900)  
 A217 WC9 (Class 600; 900)  
 Connections: Flanges according to ANSI  
 B16.5 RF (Raised Face)  
 ASME B1.20.1(NPT)  
 Spindle packing PTFE/graphite (max. 482°F)  
 Pure graphite (max 986°F)  
 (medium dependent)  
 Bellows seal with safety stuffing box  
 on request

Plug types: On/off plug (none)  
 (characteristic Parabolic plug (equal % / linear)  
 curve) V-port plug (linear)  
 Perforated plug (equal % / linear)  
 Mixing / Diverting plug (linear)  
 (See data sheet 5000-7050)

Trim material: Plug 1.4122;  
 Spindle + seat AISI 316 Ti/1.4571;  
 Plug AISI 316 Ti/1.4571;  
 Parabolic plug 1.4122 stellite or  
 hardened;  
 Perforated plug 1.4122 hardened;  
 Seat stellated

Cv-values: see tables 1 – 7

Seat leakage: class IV metallic tight  
 ANSI/FCI 70-2 class VI (tight closing) soft seated  
 PTFE (max. +392°F)  
 diverting plug port B III (<0,1%Cvs)

Max.press/temp.: ASME/ANSI B16.34  
 (see data sheet 5000-7030)

Approvals: PED (MV..., PV...)  
 ATEX (PV...)  
 TR TS – GOST (MV..., PV...)

**Technische Daten**

Nennweiten: NPS ½" ... 6"  
 Nennrücke: Class 150; 300; 600\*; 900\*  
 Gehäuse- : A216 WCB (Class 150...900)  
 werkstoffe A351 CF8M (Class 150...900)  
 A217 WC9(Class,600, 900)  
 Flansche: nach ANSI B16.5 RF  
 (Raised Face)  
 ASME B1.20.1(NPT)  
 Spindelab- : PTFE-Kohle Packung (bis 482°F)  
 dichtungen Reingraphit Packung (bis 986°F)  
 (mediumsabhängig)  
 Faltenbalgdichtung auf Anfrage

Kegelformen : Absperkegel (Auf-Zu)  
 (Kennlinie) Parabolkegel (gleich%/linear)  
 Kronenkegel (linear)  
 Lochkegel (gleich%/linear)  
 Misch-/Verteilkegel (linear)  
 (siehe auch Datenblatt 5000-7050)

Garniturwerk- Kegel 1.4122;  
 Stoffe: Spindel + Sitzring AISI 316 Ti/1.4571  
 Optional:  
 Kegel AISI 316 Ti/1.4571;  
 Parabolkegel 1.4122 stellite oder  
 gehärtet;  
 Lochkegel 1.4122 gehärtet;  
 Sitzring stellite

Cv- Werte: siehe Tabelle 1 - 7

Leckage im Sitz: class IV metallisch dichtend  
 ANSI/FCI 70-2 class VI (dichtschließend) weich  
 dichtend mit PTFE (max. +392°F)  
 Verteilkegel Tor B III (<0,1%Cvs)

Max.Druck/Temp.: ASME/ANSI B16.34

Zulassungen: PED L (MV..., PV...)  
 ATEX (PV...)  
 TR TS -GOST (MV..., PV...)

**Caractéristiques techniques**

Diamètre nominal: NPS ½" ... 6"  
 Pression nominale: Class 150; 300;  
 Matériaux du corps : A216 WCB (Class 150...900)  
 A351 CF8M (Class 150...900)  
 A217 WC9(Class,600, 900)  
 Brides: Forme C selon ANSI B16.5 RF  
 (RaisedFace)  
 ASME B1.20.1(NPT)  
 Etanchéité tige PTFE/Graphite (max. 482°F)  
 Graphite (max. 986°F)  
 (dépend de la nature du fluide)  
 Garniture d'étanchéité agréée  
 Presse étoupe de sécurité sur  
 demande

Type de clapet: clapet tout ou rien (sans)  
 clapet parabolique (égal  
 %/linéaire)  
 clapet lanterne (linéaire)  
 clapet perforé (égal %/linéaire)  
 Clapet mélangeur / répartiteur  
 linéaire  
 (voir fiche technique 5000-7050).

Matériaux siège/clapets: clapet 1.4122  
 tige + siège AISI 316 Ti/1.4571  
 en option :  
 clapet AISI 316 Ti/1.4571;  
 clapet parabolique 1.4122  
 stellite ou durcie  
 clapet perforé 1.4122 durcie,  
 siège stellite

Valeurs Cv : voir tableau 1 - 7

Etanch. à la fermeture.: class IV étanchéité  
 métallique  
 ANSI/FCI 70-2 class VI (fermet. étanche)  
 étanchéité souple avec PTFE (max.  
 +392°F)  
 clapet répartiteur porte B  
 III(<0,1%Cvs)

Press/temp.max.: ASME/ANSI B16.34

Agréments: PED (MV..., PV...)  
 ATEX (PV...)  
 TR TS- GOST(MV..., PV...)

**Technical data actuator**

See technical data sheet  
 Electric Actuator ST 5113 5113-7010  
 Electric Actuator ST 5114 5114-7010  
 Pneumatic actuator ST 6160 6100-7010  
 \*up to 4" / nur bis NPS 4"

**Technische Daten Stellantrieb**

Siehe technisches Datenblatt  
 Elektr. Stellantrieb ST 5113 5113-7010  
 Elektr. Stellantrieb ST 5114 5114-7010  
 Pneum. Stellantrieb ST 6160 6100-7010

**Caractéristiques techniques Servomoteur**

Voir fiches techniques séparées  
 Servomoteur électrique ST 5113 5113-7010  
 Servomoteur électrique ST 5114 5114-7010  
 Servomoteur pneumatique ST 6160 6100-7010

Regeltechnik Kornwestheim GmbH  
 Max-Planck-Straße 3  
 70806 Kornwestheim  
 GERMANY

Telefon +49 7154 1314-0  
 Telefax +49 7154 1314-333  
 Internet www.rtk.de  
 E-Mail: info@rtk.de



**REGELTECHNIK  
 KORNWESTHEIM**  
 A division of CIRCOR International, Inc.

Table/ Tabelle/ Tableau 1:

Cv-Values/ -Werte/ -Valeurs [gpm]

| Parabolic plug/ Parabolkegel/ Clapet parabolique |                          |      |      |     |     |     |     |     |     |      |       |       |    |       |     |     |     |       |
|--|--------------------------|------|------|-----|-----|-----|-----|-----|-----|------|-------|-------|----|-------|-----|-----|-----|-------|
| ANSI<br>NPS                                      | Seat/ Sitz/ Siège [Inch] |      |      |     |     |     |     |     |     |      |       |       |    |       |     |     |     |       |
|  | 1/8                      | 1/8  | 1/8  | 1/4 | 1/4 | 3/8 | 3/8 | 1/2 | 3/4 | 1    | 1 1/4 | 1 1/2 | 2  | 2 1/2 | 3   | 4   | 5   | 6     |
| 1/2"   | 0,01                     | 0,02 | 0,05 | 1,2 | 2,0 | 2,4 | 3,1 | 3,8 |     |      |       |       |    |       |     |     |     |       |
|  | 0,12                     | 0,29 | 0,58 |     |     |     |     |     |     |      |       |       |    |       |     |     |     |       |
| 3/4"   | 0,01                     | 0,02 | 0,05 | 1,2 | 2,0 | 2,9 | 4,3 | 4,9 | 7,0 |      |       |       |    |       |     |     |     |       |
|  | 0,12                     | 0,29 | 0,58 |     |     |     |     |     |     |      |       |       |    |       |     |     |     |       |
| 1"   | 0,01                     | 0,02 | 0,05 | 1,2 | 2,0 | 2,9 | 4,6 | 6,0 | 8,7 | 10,7 |       |       |    |       |     |     |     |       |
|  | 0,12                     | 0,29 | 0,58 |     |     |     |     |     |     |      |       |       |    |       |     |     |     |       |
| 1 1/2"   | 0,12                     | 0,29 | 0,58 | 1,2 | 2,0 | 2,9 | 5,1 | 7,9 | 13  | 17   | 22    | 28    |    |       |     |     |     |       |
| 2"   |                          |      |      | 1,2 | 2,0 | 2,9 | 5,1 | 7,9 | 14  | 21   | 28    | 35    | 43 |       |     |     |     |       |
| 2 1/2"   |                          |      |      |     |     | 2,9 | 5,1 | 7,9 | 14  | 22   | 33    | 43    | 55 | 73    |     |     |     |       |
| 3"   |                          |      |      |     |     |     |     | 7,9 | 14  | 22   | 36    | 52    | 67 | 92    | 110 |     |     |       |
| 4"   |                          |      |      |     |     |     |     |     | 14  | 22   | 36    | 56    | 81 | 115   | 140 | 172 |     |       |
| 6"   |                          |      |      |     |     |     |     |     |     |      |       | 56    | 87 | 147   | 208 | 272 | 339 | 386   |
| Stroke/ Hub/<br>Course [Inch]                    | 1                        |      |      |     |     |     |     |     |     |      | 1 1/4 |       |    | 1 3/8 |     |     | 2   | 2 3/8 |

Table/ Tabelle/ Tableau 2:

Cv-Values/ -Werte/ -Valeurs [gpm]

| On-off plug/ Absperrkegel/ Clapet tout ou rien |                           |     |     |     |      |       |       |    |       |     |     |       |       |       |
|--|---------------------------|-----|-----|-----|------|-------|-------|----|-------|-----|-----|-------|-------|-------|
| ANSI<br>NPS                                    | Seat/ Sitz/ Siège [Inch.] |     |     |     |      |       |       |    |       |     |     |       |       |       |
|  | 1/4                       | 3/8 | 1/2 | 3/4 | 1    | 1 1/4 | 1 1/2 | 2  | 2 1/2 | 3   | 4   | 5     | 6     |       |
| 1/2"   | 2,0                       | 3,1 | 3,8 |     |      |       |       |    |       |     |     |       |       |       |
| 3/4"   | 2,0                       | 4,3 | 4,9 | 7,0 |      |       |       |    |       |     |     |       |       |       |
| 1"   | 2,0                       | 4,7 | 6,0 | 8,7 | 10,7 |       |       |    |       |     |     |       |       |       |
| 1 1/2"   |                           |     | 7,9 | 13  | 17   | 22    | 28    |    |       |     |     |       |       |       |
| 2"   |                           |     |     | 14  | 21   | 28    | 35    | 43 |       |     |     |       |       |       |
| 2 1/2"   |                           |     |     |     | 22   | 33    | 43    | 55 | 73    |     |     |       |       |       |
| 3"   |                           |     |     |     |      | 36    | 52    | 67 | 92    | 110 |     |       |       |       |
| 4"   |                           |     |     |     |      |       | 56    | 81 | 115   | 140 | 172 |       |       |       |
| 6"   |                           |     |     |     |      |       |       |    | 148   | 208 | 271 | 339   | 386   |       |
| Stroke/ Hub/<br>Course [Inch.]                 | 1/2                       |     |     |     |      |       |       |    |       |     | 1   | 1 1/4 | 1 3/8 | 1 1/2 |

Table/ Tabelle/ Tableau 3:

Cv-Values/ -Werte/ -Valeurs [gpm]

| V- port plug/ Kronenkegel/ Clapet lanterne |                           |      |       |       |    |       |       |       |       |     |  |
|--|---------------------------|------|-------|-------|----|-------|-------|-------|-------|-----|--|
| ANSI<br>NPS                                | Seat/ Sitz/ Siège [Inch.] |      |       |       |    |       |       |       |       |     |  |
|  | 3/4                       | 1    | 1 1/4 | 1 1/2 | 2  | 2 1/2 | 3     | 4     | 5     | 6   |  |
| 3/4"                                       | 7,0                       |      |       |       |    |       |       |       |       |     |  |
| 1"   | 8,7                       | 10,7 |       |       |    |       |       |       |       |     |  |
| 1 1/2"                                     | 13                        | 17   | 22    | 28    |    |       |       |       |       |     |  |
| 2"   | 14                        | 21   | 28    | 35    | 43 |       |       |       |       |     |  |
| 2 1/2"                                     |                           | 22   | 33    | 43    | 55 | 73    |       |       |       |     |  |
| 3"   |                           |      | 36    | 52    | 67 | 92    | 110   |       |       |     |  |
| 4"   |                           |      |       | 56    | 81 | 115   | 140   | 172   |       |     |  |
| 6"   |                           |      |       |       |    | 147   | 208   | 271   | 229   | 285 |  |
| Stroke/ Hub/<br>Course                     | 1/2                       |      |       |       |    | 1     | 1 1/4 | 1 3/8 | 1 1/2 |     |  |

Regeltechnik Kornwestheim GmbH  
 Max-Planck-Straße 3  
 70806 Kornwestheim  
 GERMANY

Telefon +49 7154 1314-0  
 Telefax +49 7154 1314-333  
 Internet www.rtk.de  
 E-Mail: info@rtk.de



**REGELTECHNIK  
 KORNWESTHEIM**  
 A division of CIRCOR International, Inc.

Table/ Tabelle/ Tableau 4:

Cv-Values/ Werte/ -Valeurs [gpm]

| Perforated plug/ Lochkegel/ Clapet perforé |                          |     |     |       |       |       |       |       |    |       |       |     |     |
|--|--------------------------|-----|-----|-------|-------|-------|-------|-------|----|-------|-------|-----|-----|
| ANSI<br>NPS                                | Seat/ Sitz/ Siège [Inch] |     |     |       |       |       |       |       |    |       |       |     |     |
|  | 3/8                      | 1/2 | 3/4 | 1     | 1 1/4 | 1 1/2 | 2     | 2 1/2 | 3  | 3 1/2 | 4     | 5   | 6   |
| 1/2"                                       | 1,9                      | 3,0 |     |       |       |       |       |       |    |       |       |     |     |
| 3/4"                                       | 2,0                      | 3,1 | 5,3 |       |       |       |       |       |    |       |       |     |     |
| 1"   | 2,0                      | 3,1 | 5,6 | 8,4   |       |       |       |       |    |       |       |     |     |
| 1 1/2"                                     | 2,0                      | 3,1 | 5,6 | 8,8   | 14    | 22    |       |       |    |       |       |     |     |
| 2"   | 2,0                      | 3,1 | 5,6 | 8,8   | 14    | 22    | 34    |       |    |       |       |     |     |
| 2 1/2"                                     |                          |     | 5,6 | 8,8   | 15    | 22    | 35    | 57    |    |       |       |     |     |
| 3"   |                          |     |     | 8,8   | 15    | 23    | 35    | 60    | 86 |       |       |     |     |
| 4"   |                          |     |     | 8,8   | 15    | 23    | 35    | 60    | 91 | 110   | 135   |     |     |
| 6"   |                          |     |     |       |       | 23    | 35    | 60    | 91 | 110   | 142   | 220 | 303 |
| Stroke/ Hub/<br>Course [Inch]              | 1                        |     |     | 1 1/4 |       |       | 1 1/2 | 2     |    |       | 2 3/8 | 3   |     |

Table/ Tabelle/ Tableau 5:

Cv-Values/ -Werte/ -Valeurs [gpm]

| ANSI<br>NPS | Mixing plug/ Mischkegel/ Clapet mélangeur |                             |             | Diverting plug/ Verteilkegel/ Clapet répartiteur |  |                             |             |
|-------------|---|-----------------------------|-------------|--|--|-----------------------------|-------------|
|             | Stroke/ Hub/<br>Course [Inch]             | Seat/ Sitz/<br>Siège [Inch] | Cv<br>[gpm] | Stroke/ Hub/<br>Course [Inch]                    |  | Seat/ Sitz/<br>Siège [Inch] | Cv<br>[gpm] |
| 1"          | 1/2                                       | 1 1/4                       | 10,7        | 1/2  |  | 1                           | 8,7         |
| 1 1/2"      |   | 1 1/2                       | 28          |  |  | 1 1/4                       | 22          |
| 2"          |   | 2                           | 43          |  |  | 1 1/2                       | 35          |
| 2 1/2"      |   | 2 1/2                       | 73          |  |  | 2                           | 55          |
| 3"          | 3/4                                       | 3                           | 110         |  |  | 2 1/2                       | 92          |
| 4"          | 1/4                                       | 4                           | 172         | 1  |  | 3                           | 140         |
| 6"          | 1 1/2                                     | 6                           | 386         | 1 3/8  |  | 5                           | 339         |

Table /Tabelle / Tableau 6 Cv- Values /- Werte /-Valeurs [gpm]

| Multi stage parabolic plug<br>Parabolkegel zweifachentspannt/<br>Clapet perforé plusieurs étages. |                       |     |     |  |  |  |  |  |  |  |
|---|-----------------------|-----|-----|--|--|--|--|--|--|--|
| ANSI<br>NPS   | Seat/Sitz/Siege[Inch] |     |     |  |  |  |  |  |  |  |
|   | 1/4                   | 3/8 | 1/2 |  |  |  |  |  |  |  |
| 1/2"  | 0,8                   | 1,7 |     |  |  |  |  |  |  |  |
|   | 1,4                   | 2,2 | 2,8 |  |  |  |  |  |  |  |
| 3/4"  | 0,8                   | 2,1 |     |  |  |  |  |  |  |  |
|   | 1,4                   | 3,1 | 3,5 |  |  |  |  |  |  |  |
| 1"  | 0,8                   | 2,0 |     |  |  |  |  |  |  |  |
|   | 1,4                   | 5,0 | 4,2 |  |  |  |  |  |  |  |
| 1 1/2"  | 0,8                   | 2,0 |     |  |  |  |  |  |  |  |
|   | 1,4                   | 5,0 | 5,7 |  |  |  |  |  |  |  |
| 2"  | 0,8                   | 2,0 |     |  |  |  |  |  |  |  |
|   | 1,4                   | 5,0 | 5,7 |  |  |  |  |  |  |  |

Shut-off and control valves  
 Absperr- und Regelventile  
 Vannes tout ou rien et vannes de régulation

5300-AR-7050

|                              |   |
|------------------------------|---|
| Stroke/Hub/<br>Course [Inch] | 1 |
|------------------------------|---|

| Table / Tabelle / Tableau 7  |                            | Cv- Values /- Werte /-Valeurs [gpm] |     |       |       |       |       |     |       |     |   |
|--|----------------------------|-------------------------------------|-----|-------|-------|-------|-------|-----|-------|-----|---|
| Multi stage perforated plug/Lochkegel zweifachentspannt / Clapet perforé plusieurs étages. |                            |                                     |     |       |       |       |       |     |       |     |   |
| ANSI   | Seat / Sitz / Siège [Inch] |                                     |     |       |       |       |       |     |       |     |   |
| NPS  | 1/2                        | -                                   | 3/4 | 1     | 1 1/4 | 1 1/2 | 2     | 2,5 | 3     | 4   | 5 |
| 1 1/2"   |                            |                                     | 4,0 | 6,3   | 9,7   |       |       |     |       |     |   |
| 2"   |                            |                                     | 4,0 | 6,3   | 9,7   | 15,5  |       |     |       |     |   |
| 3"   |                            |                                     |     | 6,3   | 10,6  | 16,3  | 24    | 42  |       |     |   |
| 4"   |                            |                                     |     | 6,3   | 10,6  | 16,3  | 24    | 42  | 63    |     |   |
| 6"   |                            |                                     |     |       | 16,3  | 24    | 42    | 63  | 98    | 154 |   |
| Stroke /Hub<br>Course[Inch]  | 1                          |                                     |     | 1 1/4 |       |       | 1 1/2 | 2   | 2 1/2 |     |   |

Table/ Tabelle/ Tableau 6:  
[psi]

max. shut-off pressure [psi]  
 max. Schließdruck

pression de fermeture max. [psi]

| Actuator/<br>Antrieb/<br>Actionneur | Seat/ Sitz/ Siège [Inch.]            |     |     |     |     |     |       |       |     |       |     |     |     |    |  |  |
|-------------------------------------|--------------------------------------|-----|-----|-----|-----|-----|-------|-------|-----|-------|-----|-----|-----|----|--|--|
|                                     | 1/8                                  | 1/4 | 3/8 | 1/2 | 3/4 | 1   | 1 1/4 | 1 1/2 | 2   | 2 1/2 | 3   | 4   | 5   | 6  |  |  |
| ST 5113 (6 kN)                      | 580                                  | 580 | 580 | 580 | 580 | 580 | 580   | 580   | 370 | 219   | 144 | 93  | 59  | 41 |  |  |
| ST 5114 (10 kN)                     | 580                                  | 580 | 580 | 580 | 580 | 580 | 580   | 580   | 580 | 393   | 260 | 167 | 106 | 74 |  |  |
| ST 6160                             | on request/ auf Anfrage/ sur demande |     |     |     |     |     |       |       |     |       |     |     |     |    |  |  |

Pay attention:

Bitte beachten:

Faites attention s.v.p.:

| Actuator type<br>Antriebs-Typ<br>Type d'actionneur | max. stroke<br>max. Hub<br>course max. |
|--|--|
| ST 5113  | 2 3/8"                                 |
| ST 5114  | 3"                                     |
| ST 6160.A6   | 1 1/2"                                 |
| ST 6160.C6   | 2 3/8"                                 |

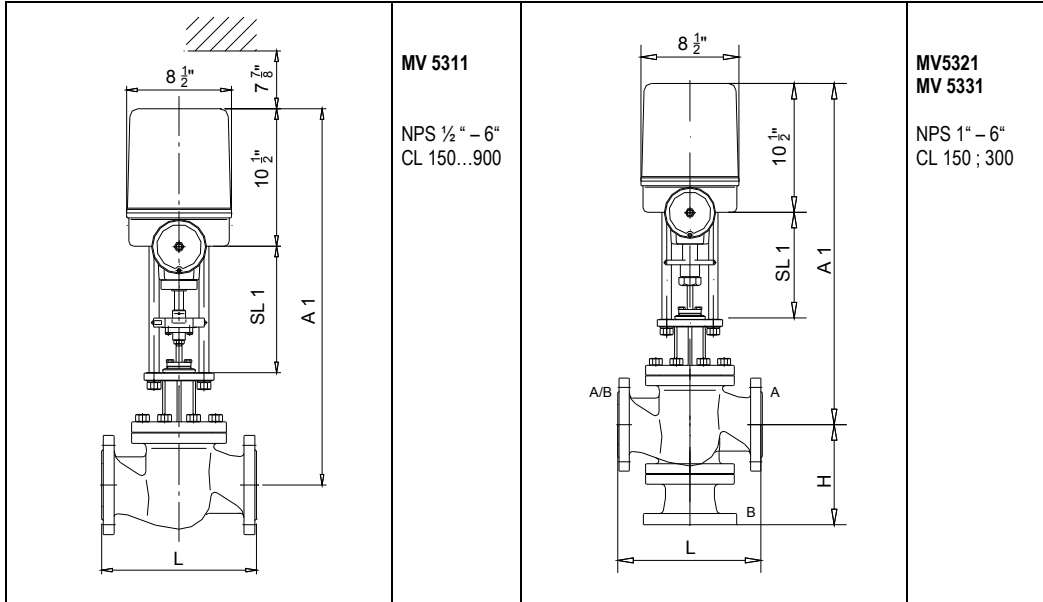
Regeltechnik Kornwestheim GmbH  
 Max-Planck-Straße 3  
 70806 Kornwestheim  
 GERMANY

Telefon +49 7154 1314-0  
 Telefax +49 7154 1314-333  
 Internet www.rtk.de  
 E-Mail: info@rtk.de



**REGELTECHNIK  
 KORNWESTHEIM**  
 A division of CIRCOR International, Inc.

Dimension sheet / Maßblatt / Encombrements



| With actuator / mit Stellantrieb //<br>avec servomoteur<br>ST 5113 |       |         |         | MV 5311 / MV 5321<br>MV 5331 |         | Weight [lbs]<br>Gewicht [lbs]<br>Poids [lbs] |     |
|--|-------|---------|---------|------------------------------|---------|--|-----|
| NPS  | Class | L       | H       | A1                           | SL1     | 2-W  | 3-W |
| 1/2"   | #150  | 7 1/4"  |         | 25 1/4"                      | 9 3/8"  | 35   |     |
|  | #300  | 7 1/2"  |         | 25 1/4"                      | 9 3/8"  | 36   |     |
|  | #600  | 8"      |         | 29 1/8"                      | 11"     | 42   |     |
| 3/4"   | #150  | 7 1/4"  |         | 25 1/4"                      | 9 3/8"  | 37   |     |
|  | #300  | 7 5/8"  |         | 25 1/4"                      | 9 3/8"  | 38   |     |
|  | #600  | 8 1/8"  |         | 29 1/8"                      | 11"     | 44   |     |
| 1"   | #150  | 7 1/4"  | 6 1/8"  | 25 3/8"                      | 9 3/8"  | 42   | 46  |
|  | #300  | 7 3/4"  | 6 1/2"  | 25 3/8"                      | 9 3/8"  | 46   | 51  |
|  | #600  | 8 1/4"  |         | 30 1/2"                      | 11"     | 62   |     |
|  | #900  | 11"     |         | 30 1/2"                      | 11"     | 64   |     |
| 1 1/2"   | #150  | 8 3/4"  | 7 1/2"  | 26 1/2"                      | 9 3/8"  | 53   | 62  |
|  | #300  | 9 1/4"  | 7 5/8"  | 26 1/2"                      | 9 3/8"  | 57   | 66  |
|  | #600  | 9 3/4"  |         | 31 1/2"                      | 11"     | 80   |     |
|  | #900  | 13"     |         | 31 1/2"                      | 11"     | 84   |     |
| 2"   | #150  | 10"     | 7 1/4"  | 26 3/4"                      | 9 3/8"  | 53   | 62  |
|  | #300  | 10 1/2" | 8 1/4"  | 26 3/4"                      | 9 3/8"  | 57   | 66  |
|  | #600  | 11 1/4" |         | 32 3/4"                      | 11"     | 114  |     |
|  | #900  | 14 3/4" |         | 32 3/4"                      | 11"     | 144  |     |
| 2 1/2"   | #150  | 10 7/8" | 8 1/8"  | 26 1/2"                      | 9 3/8"  | 71   | 86  |
|  | #300  | 11 1/2" | 9"      | 26 1/2"                      | 9 3/8"  | 79   | 95  |
| 3"   | #150  | 11 3/4" | 8 1/4"  | 27 5/8"                      | 9 3/8"  | 88   | 121 |
|  | #300  | 12 1/2" | 8 1/2"  | 27 5/8"                      | 9 3/8"  | 99   | 132 |
|  | #600  | 13 1/4" |         | 35 1/4"                      | 11 3/8" | 178  |     |
|  | #900  | 18 1/8" |         | 35 1/8"                      | 11 3/8" | 208  |     |
| 4"   | #150  | 13 3/4" | 10 1/4" | 28 5/8"                      | 9 3/8"  | 112  | 161 |
|  | #300  | 14 1/2" | 10 1/2" | 28 5/8"                      | 9 3/8"  | 130  | 179 |
|  | #600  | 15 1/2" |         | 37 1/4"                      | 11 3/8" | 234  |     |
|  | #900  | 20 7/8" |         | 37 1/4"                      | 11 3/8" | 284  |     |

Regeltechnik Kornwestheim GmbH  
 Max-Planck-Straße 3  
 70806 Kornwestheim  
 GERMANY

Telefon +49 7154 1314-0  
 Telefax +49 7154 1314-333  
 Internet www.rtk.de  
 E-Mail: info@rtk.de



Choose the Original  
 Choose Success!

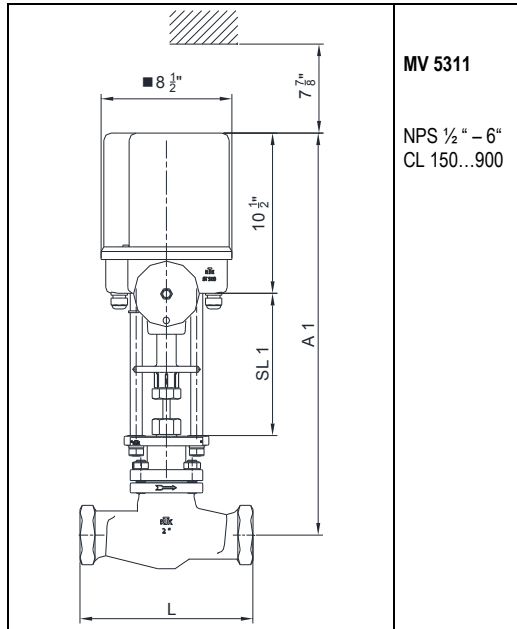
**REGELTECHNIK  
 KORNWESTHEIM**  
 A division of CIRCOR International, Inc.

Shut-off and control valves  
 Absperr- und Regelventile  
 Vannes tout ou rien et vannes de régulation

5300-AR-7070

|    |      |         |         |         |        |     |     |
|----|------|---------|---------|---------|--------|-----|-----|
| 6" | #150 | 17 3/4" | 12 1/8" | 32 3/8" | 9 3/8" | 205 | 293 |
|    | #300 | 18 5/8" | 12 1/2" | 32 3/8" | 9 3/8" | 227 | 315 |

Dimension sheet / Maßblatt / Encombrements



| With actuator / mit Stellantrieb //<br>avec servomoteur<br>ST 5113 |          |         | MV 5311 |        | Weight [lbs]<br>Gewicht [lbs]<br>Poids [lbs] |
|--|----------|---------|---------|--------|--|
| NPS  | Class    | L       | A1      | SL1    | 2-W  |
| 1/2"   | #150/300 | 8 1/8"  | 25 1/4" | 9 3/8" | 35   |
| 3/4"   | #150/300 | 8 1/4"  | 25 1/4" | 9 3/8" | 37   |
| 1"   | #150/300 | 8 1/2"  | 25 3/8" | 9 3/8" | 42   |
| 1 1/2"   | #150/300 | 9 1/8"  | 26 1/2" | 9 3/8" | 53   |
| 2"   | #150/300 | 11 1/4" | 26 3/8" | 9 3/8" | 53   |

Regeltechnik Kornwestheim GmbH  
 Max-Planck-Straße 3  
 70806 Kornwestheim  
 GERMANY

Telefon +49 7154 1314-0  
 Telefax +49 7154 1314-333  
 Internet www.rtk.de  
 E-Mail: info@rtk.de



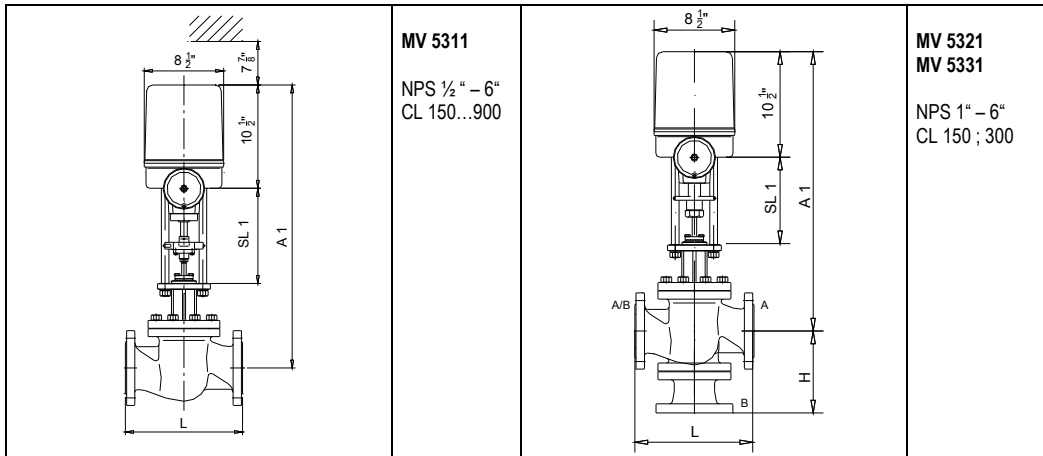
Choose the Original  
 Choose Success!

**REGELTECHNIK  
 KORNWESTHEIM**  
 A Division of CHCOR International, Inc.

Shut-off and control valves  
 Absperr- und Regelventile  
 Vannes tout ou rien et vannes de régulation

5300-AR-7080

Dimensionsheet/ Maßblatt / Encombrements



| With actuator/ mitStellantrieb /<br>avec servomoteur<br>ST 5114 |       |         |         | MV 5311/ MV 5321<br>MV 5331 |         | Weight [lbs]<br>Gewicht [lbs]<br>poids [lbs] |     |
|---|-------|---------|---------|-----------------------------|---------|--|-----|
| NPS   | Class | L       | H       | A1                          | SL1     | 2-W  | 3-W |
| 1/2"  | #150  | 7 1/4"  |         | 26"                         | 10"     | 35   |     |
|   | #300  | 7 1/2"  |         | 26"                         | 10"     | 36   |     |
|   | #600  | 8"      |         | 29 1/8"                     | 11"     | 42   |     |
| 3/4"  | #150  | 7 1/4"  |         | 26"                         | 10"     | 37   |     |
|   | #300  | 7 5/8"  |         | 26"                         | 10"     | 38   |     |
|   | #600  | 8 1/8"  |         | 29 1/8"                     | 11"     | 44   |     |
| 1"  | #150  | 7 1/4"  | 6 1/8"  | 26"                         | 10"     | 42   | 48  |
|   | #300  | 7 3/4"  | 6 1/2"  | 26"                         | 10"     | 46   | 53  |
|   | #600  | 8 1/2"  |         | 30 1/2"                     | 11"     | 66   |     |
|   | #900  | 11"     |         | 30 1/2"                     | 11"     | 68   |     |
| 1 1/2"  | #150  | 8 3/4"  | 7 1/2"  | 27 1/8"                     | 10"     | 53   | 62  |
|   | #300  | 9 1/4"  | 7 5/8"  | 27 1/8"                     | 10"     | 57   | 66  |
|   | #600  | 9 1/8"  |         | 31 1/2"                     | 11"     | 84   |     |
|   | #900  | 13"     |         | 31 1/2"                     | 11"     | 88   |     |
| 2"  | #150  | 10"     | 7 1/8"  | 27"                         | 10"     | 57   | 68  |
|   | #300  | 10 1/2" | 8 1/4"  | 27"                         | 10"     | 64   | 75  |
|   | #600  | 11 1/4" |         | 32 5/8"                     | 11"     | 119  |     |
|   | #900  | 14 3/4" |         | 32 5/8"                     | 11"     | 149  |     |
| 2 1/2"  | #150  | 10 7/8" | 8 3/4"  | 27 1/4"                     | 10"     | 71   | 86  |
|   | #300  | 11 1/2" | 9"      | 27 1/4"                     | 10"     | 79   | 95  |
| 3"  | #150  | 11 3/4" | 8 1/8"  | 28 3/8"                     | 10"     | 88   | 121 |
|   | #300  | 12 1/2" | 8 1/2"  | 28 3/8"                     | 10"     | 99   | 132 |
|   | #600  | 13 1/4" |         | 35 1/8"                     | 11 5/8" | 183  |     |
|   | #900  | 18 1/8" |         | 35 1/8"                     | 11 5/8" | 223  |     |
| 4"  | #150  | 13 7/8" | 10 1/8" | 29 3/8"                     | 10"     | 112  | 161 |
|   | #300  | 14 1/2" | 10 1/2" | 29 3/8"                     | 10"     | 130  | 176 |
|   | #600  | 15 1/2" |         | 37 1/4"                     | 11 5/8" | 239  |     |
|   | #900  | 20 7/8" |         | 37 1/4"                     | 11 5/8" | 289  |     |
| 6"  | #150  | 17 3/4" | 12 1/8" | 33"                         | 10"     | 205  | 293 |
|   | #300  | 18 5/8" | 12 1/2" | 33"                         | 10"     | 227  | 315 |

Regeltechnik Kornwestheim GmbH  
 Max-Planck-Straße 3  
 70806 Kornwestheim  
 GERMANY

Telefon +49 7154 1314-0  
 Telefax +49 7154 1314-333  
 Internet www.rtk.de  
 E-Mail: info@rtk.de



Choose the Original  
 Choose Success!

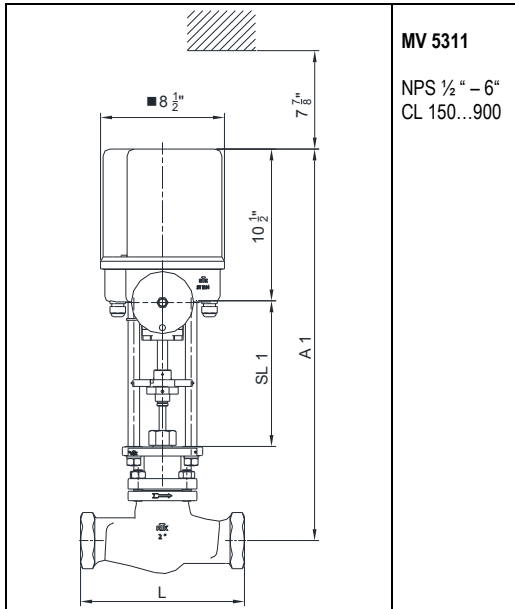
**REGELTECHNIK  
 KORNWESTHEIM**  
 A division of CIRCOR International, Inc.



Shut-off and control valves  
 Absperr- und Regelventile  
 Vannes tout ou rien et vannes de régulation

5300-AR-7090

Dimensionsheet/ Maßblatt / Encombremnts



| With actuator / mit Stellantrieb //<br>avec servomoteur<br>ST 5114 |          |         | MV 5311 |     | Weight [lbs]<br>Gewicht [lbs]<br>Poids [lbs] |
|--|----------|---------|---------|-----|--|
| NPS  | Class    | L       | A1      | SL1 | 2-W  |
| 1/2"   | #150/300 | 8 1/8"  | 26"     | 10" | 35   |
| 3/4"   | #150/300 | 8 1/4"  | 26"     | 10" | 37   |
| 1"   | #150/300 | 8 1/4"  | 26"     | 10" | 42   |
| 1 1/2"   | #150/300 | 9 1/8"  | 27 1/8" | 10" | 53   |
| 2"   | #150/300 | 11 1/4" | 27"     | 10" | 53   |

Regeltechnik Kornwestheim GmbH  
 Max-Planck-Straße 3  
 70806 Kornwestheim  
 GERMANY

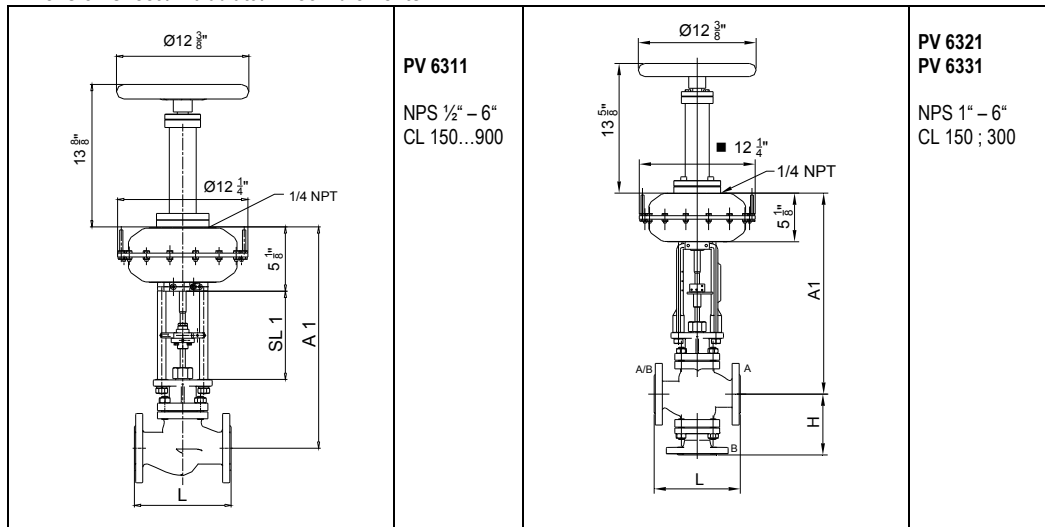
Telefon +49 7154 1314-0  
 Telefax +49 7154 1314-333  
 Internet www.rtk.de  
 E-Mail: info@rtk.de



Choose the Original  
 Choose Success!

**REGELTECHNIK  
 KORNWESTHEIM**  
 A division of CIRCOR International, Inc.

Dimension sheet / Maßblatt / Encombrements



| With actuator/ mitStellantrieb /<br>avec servomoteur<br>ST 6160.A6 |       |         |         | PV 6311/ PV 6321<br>PV 6331 |        | Weight [lbs]<br>Gewicht [lbs]<br>poids [lbs] |     |
|--|-------|---------|---------|-----------------------------|--------|--|-----|
| NPS  | Class | L       | H       | A1                          | SL1    | 2-W  | 3-W |
| 1/2"   | #150  | 7 1/4"  |         | 20 1/4"                     | 8 3/8" | 35   |     |
|  | #300  | 7 1/2"  |         | 20 1/4"                     | 8 3/8" | 36   |     |
|  | #600  | 8"      |         | 24 1/4"                     | 10"    | 42   |     |
| 3/4"   | #150  | 7 1/4"  |         | 20 1/4"                     | 8 3/8" | 37   |     |
|  | #300  | 7 5/8"  |         | 20 1/4"                     | 8 3/8" | 38   |     |
|  | #600  | 8 1/8"  |         | 24 1/4"                     | 10"    | 44   |     |
| 1"   | #150  | 7 1/4"  | 6 1/8"  | 20 3/8"                     | 8 3/8" | 42   | 48  |
|  | #300  | 7 3/4"  | 6 1/2"  | 20 3/8"                     | 8 3/8" | 46   | 53  |
|  | #600  | 8 1/4"  |         | 25 1/2"                     | 10"    | 66   |     |
|  | #900  | 11"     |         | 25 1/2"                     | 10"    | 68   |     |
| 1 1/2"   | #150  | 8 3/4"  | 7 1/2"  | 21 1/2"                     | 8 3/8" | 53   | 62  |
|  | #300  | 9 1/4"  | 7 5/8"  | 21 1/2"                     | 8 3/8" | 57   | 66  |
|  | #600  | 9 1/2"  |         | 26 3/8"                     | 10"    | 84   |     |
|  | #900  | 13"     |         | 26 3/8"                     | 10"    | 88   |     |
| 2"   | #150  | 10"     | 7 1/8"  | 21 5/8"                     | 8 3/8" | 57   | 68  |
|  | #300  | 10 1/2" | 8 1/8"  | 21 5/8"                     | 8 3/8" | 64   | 75  |
|  | #600  | 11 1/4" |         | 27 1/2"                     | 10"    | 119  |     |
|  | #900  | 14 3/4" |         | 27 1/2"                     | 10"    | 149  |     |
| 2 1/2"   | #150  | 10 5/8" | 8 3/4"  | 21 1/2"                     | 8 3/8" | 71   | 86  |
|  | #300  | 11 1/2" | 9"      | 21 1/2"                     | 8 3/8" | 79   | 95  |
| 3"   | #150  | 11 3/4" | 8 1/8"  | 22 5/8"                     | 8 3/8" | 88   | 121 |
|  | #300  | 12 1/2" | 8 1/2"  | 22 5/8"                     | 8 3/8" | 99   | 132 |
|  | #600  | 13 1/4" |         | 29 3/4"                     | 10"    | 183  |     |
|  | #900  | 18 1/8" |         | 29 3/4"                     | 10"    | 223  |     |
| 4"   | #150  | 13 1/8" | 10 1/8" | 23 5/8"                     | 8 3/8" | 112  | 161 |
|  | #300  | 14 1/2" | 10 1/2" | 23 5/8"                     | 8 3/8" | 130  | 179 |
|  | #600  | 15 1/2" |         | 31 3/4"                     | 10"    | 239  |     |
|  | #900  | 20 1/4" |         | 31 3/4"                     | 10"    | 289  |     |
| 6"   | #150  | 17 3/4" | 12 1/8" | 27 1/4"                     | 8 3/8" | 205  | 293 |
|  | #300  | 18 5/8" | 12 1/2" | 27 1/4"                     | 8 3/8" | 227  | 315 |

The height valves with yoke is identical to valves with pillars.  
 Die Bauhöhen der Ventile mit Ausrüstung Joch, sind identisch zu den Bauhöhen mit Ausrüstung Säulen.  
 La hauteur des vannes avec exécution arcade est identique à la hauteur des vannes avec exécution avec pilliers.

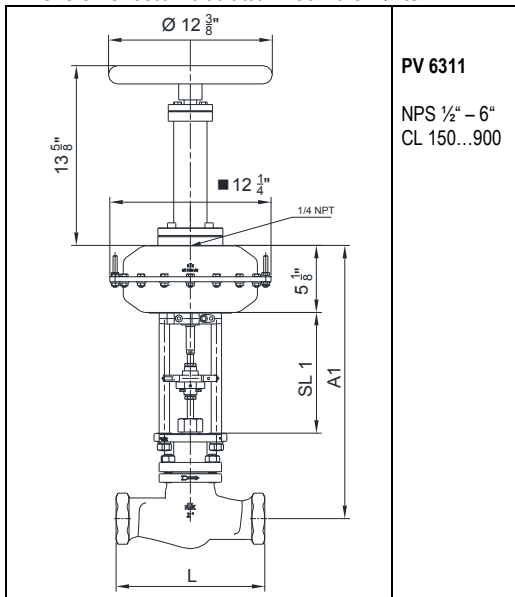
Regeltechnik Kornwestheim GmbH  
 Max-Planck-Straße 3  
 70806 Kornwestheim  
 GERMANY

Telefon +49 7154 1314-0  
 Telefax +49 7154 1314-333  
 Internet www.rtk.de  
 E-Mail: info@rtk.de



**REGELTECHNIK  
 KORNWESTHEIM**  
 A division of CIRCOR International, Inc.

Dimension sheet / Maßblatt / Encombrements



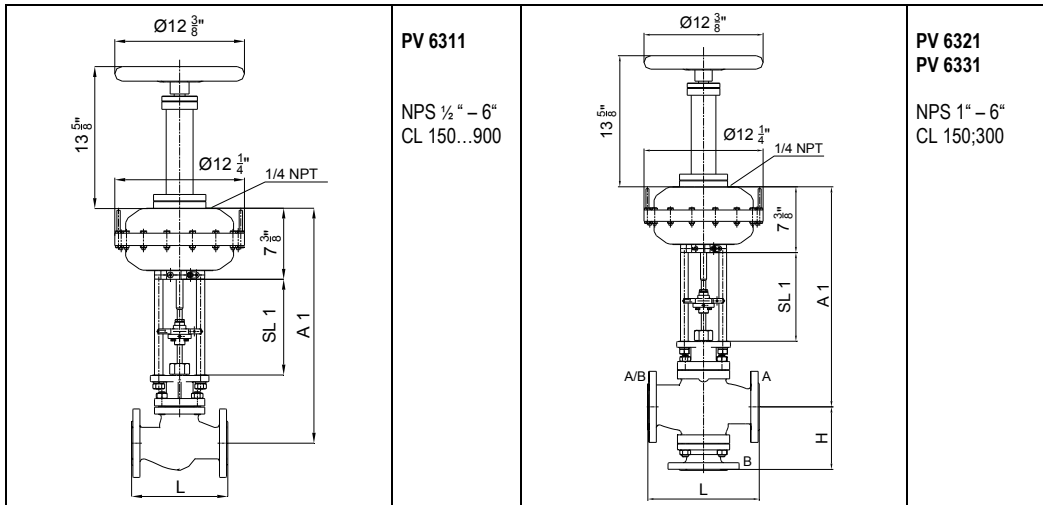
| With actuator / mit Stellantrieb //<br>avec servomoteur<br>ST 6160.A6 |          |         | PV 6311 |        | Weight [lbs]<br>Gewicht [lbs]<br>Poids [lbs] |
|---|----------|---------|---------|--------|--|
| NPS   | Class    | L       | A1      | SL1    | 2-W  |
| 1/2   | #150/300 | 8 1/8"  | 20 1/4" | 8 3/8" | 35   |
| 3/4   | #150/300 | 8 1/4"  | 20 1/4" | 8 3/8" | 37   |
| 1"  | #150/300 | 8 1/2"  | 20 1/4" | 8 3/8" | 42   |
| 1 1/2"  | #150/300 | 9 1/8"  | 21 1/2" | 8 3/8" | 53   |
| 2"  | #150/300 | 11 1/4" | 21 5/8" | 8 3/8" | 57   |

The height valves with yoke is identical to valves with pillars.  
 Die Bauhöhen der Ventile mit Ausrüstung Joch, sind identisch zu den Bauhöhen mit Ausrüstung Säulen.  
 La hauteur des vannes avec exécution arcade est identique à la hauteur des vannes avec exécution avec piliers.

Regeltechnik Kornwestheim GmbH  
 Max-Planck-Straße 3  
 70806 Kornwestheim  
 GERMANY

Telefon +49 7154 1314-0  
 Telefax +49 7154 1314-333  
 Internet www.rtk.de  
 E-Mail: info@rtk.de

Dimension sheet/ Maßblatt / Encombrements



| With actuator/mitStellantrieb<br>avec servomoteur<br>ST 6160.C6 |       |         |         | PV 6311/ PV 6321<br>PV 6331 |         | Weight [lbs]<br>Gewicht [lbs]<br>poids [lbs] |     |
|---|-------|---------|---------|-----------------------------|---------|--|-----|
| NPS   | Class | L       | H       | A1                          | SL1     | 2-W  | 3-W |
| 1/2"  | #150  | 7 1/4"  |         | 21 3/4"                     | 9 1/8"  | 42   |     |
|   | #300  | 7 1/2"  |         | 21 3/4"                     | 9 1/4"  | 43   |     |
|   | #600  | 8"      |         | 25 3/4"                     | 10 3/4" | 49   |     |
| 3/4"  | #150  | 7 1/4"  |         | 21 3/4"                     | 9 1/8"  | 44   |     |
|   | #300  | 7 5/8"  |         | 21 3/4"                     | 9 1/8"  | 45   |     |
|   | #600  | 8 1/8"  |         | 25 3/4"                     | 10 3/4" | 51   |     |
| 1"  | #150  | 7 1/4"  | 6 1/8"  | 22"                         | 9 1/8"  | 48   | 55  |
|   | #300  | 7 3/4"  | 6 1/2"  | 22"                         | 9 1/8"  | 53   | 60  |
|   | #600  | 8 1/4"  |         | 27"                         | 10 3/4" | 72   |     |
|   | #900  | 11"     |         | 27"                         | 10 3/4" | 74   |     |
| 1 1/2"  | #150  | 8 3/4"  | 7 1/2"  | 23 1/8"                     | 9 1/8"  | 60   | 68  |
|   | #300  | 9 1/4"  | 7 5/8"  | 23 1/4"                     | 9 1/8"  | 64   | 73  |
|   | #600  | 9 7/8"  |         | 28 1/8"                     | 10 3/4" | 90   |     |
|   | #900  | 13"     |         | 28 1/8"                     | 10 3/4" | 94   |     |
| 2"  | #150  | 10"     | 7 7/8"  | 22 7/8"                     | 9 1/8"  | 64   | 75  |
|   | #300  | 10 1/2" | 8 1/4"  | 22 7/8"                     | 9 1/8"  | 71   | 82  |
|   | #600  | 11 1/4" |         | 29"                         | 10 3/4" | 125  |     |
|   | #900  | 14 3/4" |         | 29"                         | 10 3/4" | 145  |     |
| 2 1/2"  | #150  | 10 7/8" | 8 1/8"  | 23"                         | 9 1/8"  | 77   | 88  |
|   | #300  | 11 1/2" | 9"      | 23"                         | 9 1/8"  | 86   | 97  |
| 3"  | #150  | 11 3/4" | 8 1/8"  | 24 1/4"                     | 9 1/8"  | 95   | 128 |
|   | #300  | 12 1/2" | 8 1/2"  | 24 1/4"                     | 9 1/8"  | 106  | 139 |
|   | #600  | 13 1/4" |         | 31 1/4"                     | 10 3/4" | 189  |     |
|   | #900  | 18 1/8" |         | 31 1/4"                     | 10 3/4" | 219  |     |
| 4"  | #150  | 13 7/8" | 10 1/8" | 25 1/4"                     | 9 1/8"  | 119  | 168 |
|   | #300  | 14 1/2" | 10 1/2" | 25 1/4"                     | 9 1/8"  | 137  | 185 |
|   | #600  | 15 1/2" |         | 33 1/4"                     | 10 3/4" | 245  |     |
|   | #900  | 20 7/8" |         | 33 1/4"                     | 10 3/4" | 295  |     |
| 6"  | #150  | 17 3/4" | 12 1/8" | 29"                         | 9 1/8"  | 212  | 300 |
|   | #300  | 18 5/8" | 12 1/2" | 29"                         | 9 1/8"  | 234  | 322 |

The height of valves with yoke is identical to valves with pillars.  
 Die Bauhöhen der Ventile mit Ausrüstung Joch, sind identisch zu den Bauhöhen mit Ausrüstung Säulen.  
 La hauteur des vannes avec exécution arcade est identique à la hauteur des vannes avec exécution avec piliers.

Regeltechnik Kornwestheim GmbH  
 Max-Planck-Straße 3  
 70806 Kornwestheim  
 GERMANY

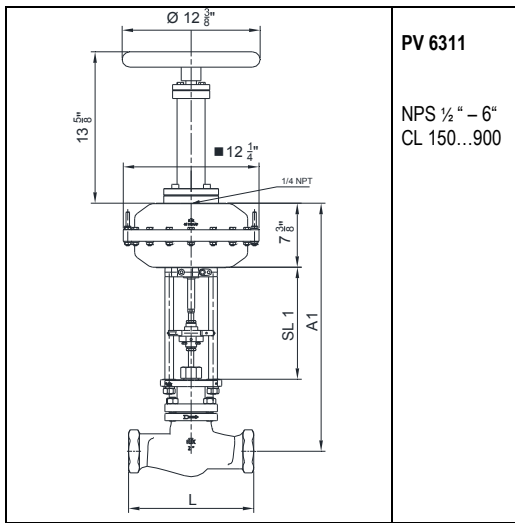
Telefon +49 7154 1314-0  
 Telefax +49 7154 1314-333  
 Internet www.rtk.de  
 E-Mail: info@rtk.de



Choose the Original  
 Choose Success!

**REGELTECHNIK  
 KORNWESTHEIM**  
 A division of CIRCOR International, Inc.

Dimension sheet/ Maßblatt / Encombremes



PV 6311  
 NPS 1/2" – 6"  
 CL 150...900

| With actuator / mit Stellantrieb //<br>avec servomoteur<br>ST 6160.C6 |          |         | PV 6311 |        | Weight [lbs]<br>Gewicht [lbs]<br>Poids [lbs] |
|---|----------|---------|---------|--------|--|
| NPS   | Class    | L       | A1      | SL1    | 2-W  |
| 1/2"  | #150/300 | 8 1/8"  | 21 3/4" | 9 1/8" | 42   |
| 3/4"  | #150/300 | 8 1/4"  | 21 3/4" | 9 1/8" | 44   |
| 1"  | #150/300 | 8 1/4"  | 22"     | 9 1/8" | 48   |
| 1 1/2"  | #150/300 | 9 7/8"  | 23 1/8" | 9 1/8" | 60   |
| 2"  | #150/300 | 11 1/4" | 22 7/8" | 9 1/8" | 64   |

The height of valves with yoke is identical to valves with pillars.  
 Die Bauhöhen der Ventile mit Ausrüstung Joch, sind identisch zu den Bauhöhen mit Ausrüstung Säulen.  
 La hauteur des vannes avec exécution arcade est identique à la hauteur des vannes avec exécution avec piliers.

Regeltechnik Kornwestheim GmbH  
 Max-Planck-Straße 3  
 70806 Kornwestheim  
 GERMANY

Telefon +49 7154 1314-0  
 Telefax +49 7154 1314-333  
 Internet www.rtk.de  
 E-Mail: info@rtk.de

Spare parts list / Ersatzteilliste / Liste de pièces détachées

| Item |   |          | EN                                | GER                              | FR  |
|------|---|----------|-----------------------------------|----------------------------------|---|
| 101  | A216 WCB; A351 CF8M; A217 WC9                 | BVG...   | body                              | Gehäuse                          | corps   |
| 102  | AISI 316 Ti                                   | FSIR...  | seat ring                         | Sitzring                         | siège   |
| 201  | A216 WCB; A351 CF8M; A217 WC9                 | BVD...   | bonnet                            | Deckel                           | couvercle                                     |
| 300  |   | BVK....  | plug assembly                     | Kegelgruppe                      | clapet  |
| 301  | 1.4122  | FKKP...  | plug head                         | Kegelkopf                        | clapet  |
| 302  | AISI 316 Ti                                   |          | plug spindle                      | Kegelspindel                     | tige  |
| 400  |   | CVSHHNAE | spindle packing<br>PTFE-graphite  | Spindelabdichtung<br>PTFE- Kohle | garniture presse<br>étoupe<br>PTFE-graphite   |
| 401  | ASTM C 37700                                  |          | cap nut                           | Überwurfmutter                   | écrou à chapeau                               |
| 402  | ASTM C 83600                                  |          | guide bush                        | Führungsbuchse                   | douille                                       |
| 403  | ASTM C 90250                                  |          | guide ring                        | Führungsring                     | douille                                       |
| 405  | NBR 90 (Acrylonitrile-butadiene rubber)       |          | scraper ring                      | Abstreifring                     | anneau racleur                                |
| 406  | Teflon Chevron                                | GDID.... | chevron rings                     | Dachmanschetten                  | manchettes                                    |
| 407  | AISI 304                                      |          | washer                            | Scheibe                          | rondelle                                      |
| 408  | AISI 303                                      |          | spring                            | Druckfeder                       | ressort                                       |
| 409  | NBR ((Acrylonitrile-butadiene rubber)         |          | o-ring                            | O-Ring                           | joint torique                                 |
| 420  |   | CVSHONAE | spindle packing<br>PTFE- graphite | Spindelabdichtung<br>PTFE- Kohle | garniture presse<br>étoupe<br>PTFE - graphite |
| 421  | ASTM C 83600                                  |          | gbush                             | Führungsbuchse                   | douille                                       |
| 422  | DIN 933 - A2 M10X20                           |          | bolt                              | Sechskantschraube                | vis à tete                                    |
| 423  | NBR 90 (Acrylonitrile-butadiene rubber)       |          | scraper ring                      | Abstreifring                     | anneau racleur                                |
| 424  | Teflon Chevron                                | GDID.... | chevron rings                     | Dachmanschetten                  | manchettes                                    |
| 425  | EPDM<br>(EthylenePropyleneDieneM-classrubber) |          | o-ring                            | O-Ring                           | joint torique                                 |
| 427  | AISI 304                                      |          | washer                            | Scheibe                          | rondelle                                      |
| 429  | AISI 301                                      |          | spring                            | Druckfeder                       | ressort                                       |
| 430  | ASTM C 83600                                  |          | bush                              | Buchse                           | douille                                       |
| 431  | ASTM C 90250                                  |          | bush                              | Buchse                           | douille                                       |
| 501  | C 35 Y; 24CrMo 5*                             |          | nut                               | Sechskantmutter                  | écrou six pans                                |
| 502  | Ck 35 Yk; 21CrMoV 57*                         |          | stud                              | Stiftschraube                    | tige filetée                                  |
| 503  | Graphite                                      | FDIF...  | gasket                            | Flachdichtring                   | joint plat                                    |
| 460  |   | CVSHHRBE | spindle packing<br>PTFE-graphite  | Spindelabdichtung<br>PTFE- Kohle | garniture presse<br>étoupe<br>PTFE-graphite   |
| 461  | ASTM C 37700                                  |          | cap nut                           | Überwurfmutter                   | écrou à chapeau                               |
| 462  | ASTM C 83600                                  |          | fairlead bush                     | Führungsbuchse                   | douille                                       |
| 463  | ASTM C 90250                                  |          | bush                              | Führungsring                     | douille                                       |
| 465  | NBR 90 (Acrylonitrile-butadiene rubber)       |          | scraper ring                      | Abstreifring                     | anneau racleur                                |
| 466  | Teflon Chevron                                | GDID.... | chevron rings                     | Dachmanschetten                  | manchettes                                    |
| 467  | AISI 304                                      |          | washer                            | Scheibe                          | rondelle                                      |
| 468  | AISI 301                                      |          | spring                            | Druckfeder                       | ressort                                       |
| 469  | NBR (Acrylonitrile-butadiene                  |          | O-ring                            | O-Ring                           | joint torique                                 |

Regeltechnik Kornwestheim GmbH  
 Max-Planck-Straße 3  
 70806 Kornwestheim  
 GERMANY

Telefon +49 7154 1314-0  
 Telefax +49 7154 1314-333  
 Internet www.rtk.de  
 E-Mail: info@rtk.de



**REGELTECHNIK  
 KORNWESTHEIM**  
 A division of CIRCOR International, Inc.

|     |                      |          |                             |                                |  |
|-----|----------------------|----------|-----------------------------|--------------------------------|--|
|     | rubber)              |          |                             |                                |  |
| 601 | A216 WCB ; A351 CF8M | BVB...   | B-flange                    | B-Flansch                      | Bridge B                               |
| 800 |                      | CVSHHNA  | spindle packing<br>graphite | Spindelabdichtung<br>Grafit    | garniture presse<br>étoupe<br>graphite |
| 801 | AISI 304             |          | spacer                      | Distanzrohr                    | tube d'écartement                      |
| 802 | ASTM C 83600         |          | bush                        | Führungsring                   | douille                                |
| 803 | Graphite             |          | packing                     | Presspackung                   | garniture                              |
| 804 | ASTM C 83600         |          | stuffing box                | Stopfbuchse                    | boite                                  |
| 805 | ASTM C 37700         |          | cap nut                     | Überwurfmutter                 | écrou à chapeau                        |
| 820 |                      | CVSHONAA | spindle packing<br>graphite | Stopfbuchsabdichtung<br>Grafit | garniture presse<br>étoupe<br>graphite |
| 821 | ASTM C 83600         |          | bush                        | Buchse                         | douille                                |
| 822 | Graphite             |          | packing                     | Presspackung                   | garniture                              |
| 825 | AISI 316 Ti          |          | stuffing box                | Stopfbuchse                    | garniture d'étanchéité                 |
| 826 | AISI 304             |          | stud                        | Stiftschraube                  | tige filetée                           |
| 827 | AISI 304             |          | nut                         | Sechskantmutter                | écrou six pans                         |
| 860 |                      | CVSHRBA  | spindle packing<br>graphite | Spindelabdichtung<br>Grafit    | garniture presse<br>étoupe<br>graphite |
| 861 | AISI 304             |          | spacer                      | Distanzrohr                    | tube d'écartement                      |
| 862 | ASTM C 83600         |          | bush                        | Führungsring                   | douille                                |
| 863 | Graphite             |          | packing                     | Presspackung                   | garniture                              |
| 864 | ASTM C 37700         |          | cap nut                     | Überwurfmutter                 | écrou à chapeau                        |

\* für cl 600 und 900

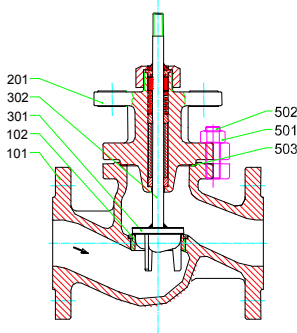
Regeltechnik Kornwestheim GmbH  
 Max-Planck-Straße 3  
 70806 Kornwestheim  
 GERMANY

Telefon +49 7154 1314-0  
 Telefax +49 7154 1314-333  
 Internet www.rtk.de  
 E-Mail: info@rtk.de

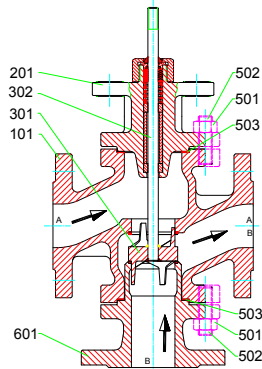


**REGELTECHNIK  
 KORNWESTHEIM**  
 A division of CIRCOR International, Inc.

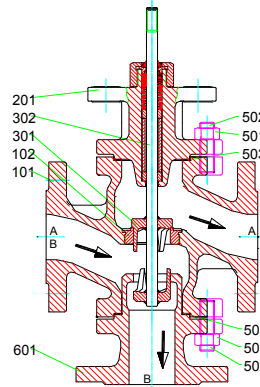
Spare parts list / Ersatzteilliste / Liste de pièces détachées



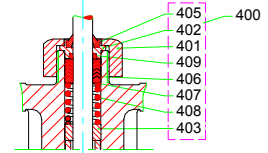
**MV 5311, PV 6311**  
 NPS 1/2"-2.5", CL 150,300



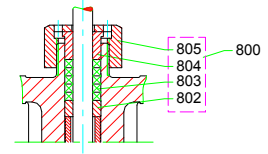
**MV 5321, PV 6321**  
 1"-6", CL 150,300



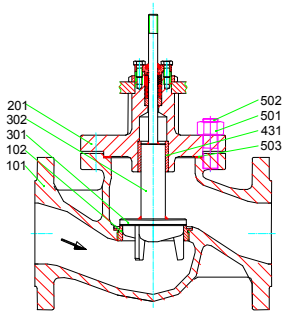
**MV 5331, PV 6331**  
 1"-6", CL 150,300



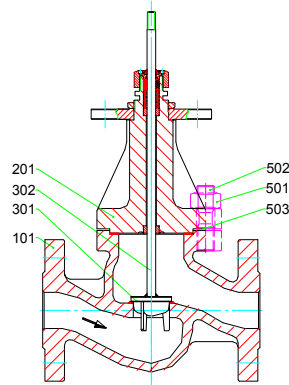
NPS 1/2"-6", CL 150,300



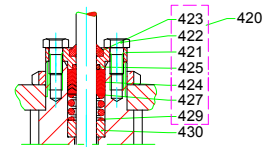
NPS 1/2"-6", CL 150,300



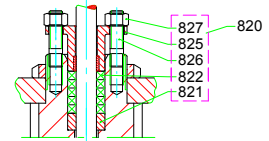
**MV 5311, PV 6311**  
 NPS 3"-6", CL 150,300



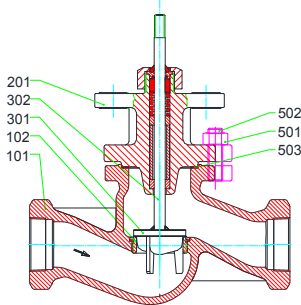
**MV 5311, PV 6311**  
 NPS 1/2"-4", CL 600,900



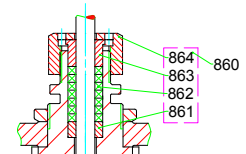
NPS 3"-6", CL 150,300



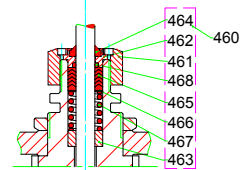
NPS 3"-6", CL 150,300



**MV 5311, PV 6311**  
 NPS 1/2"-2", CL 150,300



NPS 1/2"-4", CL 600,900



NPS 1/2"-4", CL 600,900

Subject to technical alteration / Technische Änderung vorbehalten / Sous réserve de modifications techniques

Regeltechnik Kornwestheim GmbH  
 Max-Planck-Straße 3  
 70806 Kornwestheim  
 GERMANY

Telefon +49 7154 1314-0  
 Telefax +49 7154 1314-333  
 Internet www.rtk.de  
 E-Mail: info@rtk.de